

# WATER PUMPS

---

<b>Adapters &amp; Clamps</b> .....	<b>6-3</b>
Aluminum Fire Hose Adapters (Female NPSH x Male NST) .....	6-3
Male Joint .....	6-3
WSP33 Garden Hose Adapter and Low Suction Device .....	6-3
WX10 1" NPT – 3/4" Garden Hose Adapter .....	6-3
Clamps and Clamp Sets .....	6-3
WSP33, WSP50, WSP100 Fittings .....	6-3
<b>Couplers—Assemblies and Parts</b> .....	<b>6-4</b>
Quick Disconnect Coupling Assemblies .....	6-4
Threaded Coupling Parts .....	6-4
Aluminum Male Camlock Adapter (Female NPT) .....	6-4
Aluminum Male Camlock Adapter (Male NPT) .....	6-4
Aluminum Female Camlock Coupler (Female NPT) .....	6-4
Aluminum Female Camlock Coupler (Male NPT) .....	6-5
Aluminum Female Hose Shank Camlock Coupler .....	6-5
Aluminum Male Hose Shank Camlock Adapter .....	6-5
Aluminum with Brass Swivel Female Pin Lug .....	6-5
Aluminum with Brass Swivel Pin Lug Coupling Set .....	6-5
Camlock Gaskets .....	6-5
Pin Lug Gaskets .....	6-6
Spanner Wrench with Pin Lug Style Fitting .....	6-6
Steel-Plated Combination Pipe Nipples .....	6-6
<b>Hose—Assemblies</b> .....	<b>6-6</b>
125 PSI 50' Heavy-Duty Mill Discharge Hose Assembly (Coupled Camlock) .....	6-6
125 PSI 50' Heavy-Duty Mill Discharge Hose Assembly (Coupled Male/Female Pin Lug) .....	6-6
50' Blue Goodyear Spiraflex Discharge Hose Assembly (Coupled Camlock) .....	6-6
50' Blue Goodyear Spiraflex Discharge Hose Assembly (Coupled Male/Female Pin Lug) .....	6-7
Blue Goodyear Spiraflex Discharge Hose (100' Bulk) .....	6-7
20' Green PVC Water Suction Hose Assembly (Coupled Camlock & Pipe Nipple) .....	6-7
Green PVC Water Suction Hose Assembly (Coupled Male & Female Pin Lug) .....	6-7
Heavy-Duty Center Punch Clamp Tool & Clamps .....	6-7

# WATER PUMPS

---

Hose—Boxed Kits . . . . .	6-8
20' Green Suction, 50' Blue Discharge, 3/8" Steel Strainer (Coupled Camlock & Pipe Nipple Including Male Adapters) . . . . .	6-8
20' Green Suction, 50' Blue Discharge, Nozzle, 1/8" Steel Strainer (Coupled Male & Female Pin Lug) . . . . .	6-8
20' Green Suction, 50' Blue Discharge, 3/8" Steel Strainer (Coupled Male & Female Pin Lug) . . . . .	6-8
Hose—Suction . . . . .	6-8
Standard Suction Hose . . . . .	6-8
Lift and Wheel Kits . . . . .	6-9
WT20, WT20X, WT30, WT30X Hanger/Lift Kit . . . . .	6-9
Two Wheel Kits . . . . .	6-9
Nozzles . . . . .	6-9
Adjustable Brass Hose Nozzle . . . . .	6-9
Adjustable Red Polycarbonate Hose Nozzle . . . . .	6-9
Replacement Hose Nozzle Gaskets (Brass & Poly) . . . . .	6-9
Brass Cam Arm Assembly Service Kits . . . . .	6-9
Strainers (Metal & Plastic) . . . . .	6-10
Strainers (Steel) . . . . .	6-11
1/8" Hole Steel Strainers . . . . .	6-11
3/8" Hole Steel Strainers . . . . .	6-11
Steel Skimmer Strainers . . . . .	6-11
Tools	
Water Pump Vacuum Tester . . . . .	6-11
Displays . . . . .	6-12

# WATER PUMPS

## Adapters & Clamps

### Aluminum Fire Hose Adapters (Female NPSH x Male NST)

Allows connection to standard fire hoses for use on job sites.

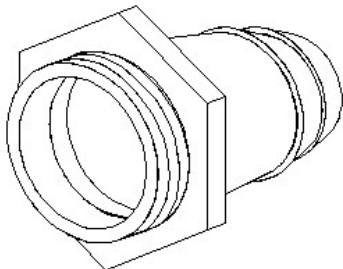
WB20X, WH20X, WT20X, WMP20X 2" x 1-1/2"	JRLA-20NPF-15NHM
WB20X, WH20X, WT20X, WMP20X 2" x 2-1/2"	JRLA-20NPF-25NHM
WB30X, WT30X, WDP30X 3" x 2-1/2"	JRLA-30NPF-25NHM
WH15X, WX15 1-1/2" x 1-1/2"	JRLA-15NPF-15NHM
WH15X, WX15 1-1/2" x 2-1/2"	JRLA-15NPF-25NHM



### Male Joint

Use this special joint to connect a 2" female metal strainer to a hose. Requires a 2" clamp set.

Male Joint	78326-954-000
------------	---------------



### WSP33 Garden Hose Adapter and Low Suction Device

The low water suction device can be used with the float in the raised manual position (only) to 10 mm minimum depth.

3/4" garden hose adapter	WSP33A-GHA
Low water suction device	WSP33-2601400110



### WX10 1" NPT – 3/4" Garden Hose Adapter

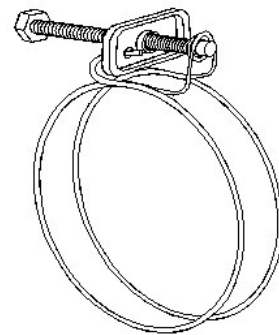
Garden Hose Adapter	78173-YE9-611
---------------------	---------------



### Clamps and Clamp Sets

Clamps and clamp sets are used to connect male joints and other coupling assemblies to a hose.

1" band clamp	78139-YB0-710
1.5" band clamp	78139-YB0-760
2" band clamp	78139-YB3-000



### WSP33, WSP50, WSP100 Fittings

The 1-1/4" close nipple allows a female discharge hose to be connected to the WSP33.

The 2" elbow and close nipples allow for a vertical discharge on the WSP50, WSP100. Order two 2" close nipples for each 2" elbow.

1-1/4" close nipple	78321-954-000AH
2" elbow	78312-954-000AH
2" close nipple	78322-954-000AH



# WATER PUMPS

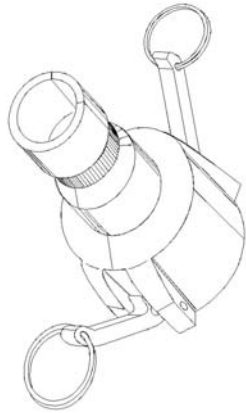
## Couplers—Assemblies and Parts

### Quick Disconnect Coupling Assembly

Order the connectors and a gasket to make connecting a hose quick and easy for 1" hose pumps.

1" quick disconnect assembly

1" male connector	78176-YE9-800
1" gasket (male)	78178-YE9-800
1" female connector	78177-YE9-800
1" gasket (female)	78179-YE9-800



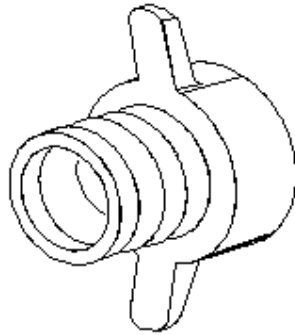
### Threaded Coupling Parts

A coupling assembly connects a suction or discharge hose to a pump.

Order one hose joint, one threaded coupler, and one gasket for a complete assembly (NPT thread).

1" threaded coupling assembly

1" hose joint	78311-YB0-710
1" threaded coupler	78312-YE9-000
1" gasket	78178-YE9-800



### Aluminum Male Camlock Adapter (Female NPT)

WB20X, WH20X, WMP20X, WT20X	QA-200-DCH
WB30X, WDP30X, WT30X	QA-300-DCH
WH15X, WX15	QA-150-DCH
WT40X	QA-400-DCH
WX10	QA-100-DCH



### Aluminum Male Camlock Adapter (Male NPT)

WB20X, WH20X, WMP20X, WT20X	QF-200-DCH
WH15X, WX15	QF-150-DCH
WT40X	QF-400-DCH



### Aluminum Female Camlock Coupler (Female NPT)

WB20X, WH20X, WMP20X, WT20X	QD-200-DCH
WB30X, WDP30X, WT30X	QD-300-DCH
WH15X, WX15	QD-150-DCH
WT40X	QD-400-DCH



# WATER PUMPS

## Couplers—Assemblies and Parts (cont.)

### Aluminum Female Camlock Coupler (Male NPT)

WB20X, WH20X, WMP20X, WT20X	QB-200-DCH
WB30X, WDP30X, WT30X	QB-300-DCH
WH15X, WX15	QB-150-DCH
WT40X	QB-400-DCH



### Aluminum Male Hose Shank Camlock Adapter

WB20X, WH20X, WMP20X, WT20X	QE-200-DCH
WB30X, WDP30X, WT30X	QE-300-DCH
WH15X, WX15	QE-150-DCH
WT40X	QE-400-DCH



### Aluminum with Brass Swivel Pin Lug Coupling Set

WB20X, WH20X, WMP20X, WT20X	SU-200-SBH
WB30X, WDP30X, WT30X	SU-300-SBH
WH15X, WX15	SU-150-SBH
WT40X	SU-400-SBH



### Aluminum Female Hose Shank Camlock Coupler

WB20X, WH20X, WMP20X, WT20X	QC-200-DCH
WB30X, WDP30X, WT30X	QC-300-DCH
WH15X, WX15	QC-150-DCH
WT40X	QC-400-DCH
WX10	QC-100-DCH



### Aluminum with Brass Swivel Female Pin Lug

WB20X, WH20X, WMP20X, WT20X	SF-200-SBH
WB30X, WDP30X, WT30X	SF-300-SBH
WH15X, WX15	SF-150-SBH
WT40X	SF-400-SBH



### Camlock Gaskets

WB20X, WH20X, WMP20X, WT20X	QRG-200-00H
WB30X, WDP30X, WT30X	QRG-300-00H
WH15X, WX15	QRG-150-00H
WT40X	QRG-400-00H
WX10	QRG-100-00H



# WATER PUMPS

## Couplers—Assemblies and Parts (cont.)

### Pin Lug Gaskets

WB20X, WH20X, WMP20X, WT20X	SRW-200-00H
WB30X, WDP30X, WT30X	SRW-300-00H
WH15X, WX15	SRW-150-00H
WT40X	SRW-400-00H



### Spanner Wrench with Pin Lug Style Fitting

WB20X, WH20X, WMP20X, WT20X	SW-200-00H
WB30X, WDP30X, WT30X	SW-300-00H
WH15X, WX15	SW-150-00H
WT40X	SW-400-00H



### Steel-Plated Combination Pipe Nipples

WB20X, WH20X, WMP20X, WT20X	CN-200-SPH
WB30X, WDP30X, WT30X	CN-300-SPH
WH15X, WX15	CN-150-SPH
WT40X	CN-400-SPH



## Hose—Assemblies

### 125 PSI 50' Heavy-Duty Mill Discharge Hose Assembly (Coupled Camlock)

WB20X, WH20X, WMP20X, WT20X	1130-2000-50CEH
WB30X, WDP30X, WT30X	1130-3000-50CEH
WH15X, WX15	1130-1500-50CEH
WT40X	1130-4000-50CEH



### 125 PSI 50' Heavy-Duty Mill Discharge Hose Assembly (Coupled Male/Female Pin Lug)

WB20X, WH20X, WMP20X, WT20X	1130-2000-50H
WB30X, WDP30X, WT30X	1130-3000-50H
WH15X, WX15	1130-1500-50H
WT40X	1130-4000-50H



### 50' Blue Goodyear Spiraflex Discharge Hose Assembly (Coupled Camlock)

WB20X, WH20X, WMP20X, WT20X (80 psi)	1145-2000-50CEH
WB30X, WDP30X, WT30X (55 psi)	1145-3000-50CEH
WH15X, WX15 (90 psi)	1145-1500-50CEH
WT40X (50 psi)	1145-4000-50CEH



# WATER PUMPS

## Hose—Assemblies (cont.)

### 50' Blue Goodyear Spiraflex Discharge Hose Assembly (Coupled Male/Female Pin Lug)

WB20X, WH20X, WMP20X, WT20X (80 psi)	1145-2000-50H
WB30X, WDP30X, WT30X (55 psi)	1145-3000-50H
WH15X, WX15 (90 psi)	1145-1500-50H
WT40X (50 psi)	1145-4000-50H



### 20' Green PVC Water Suction Hose Assembly (Coupled Camlock & Pipe Nipple)

WB20X, WH20X, WMP20X, WT20X	1240-2000-20CNH
WB30X, WDP30X, WT30X	1240-3000-20CNH
WH15X, WX15	1240-1500-20CNH
WT40X	1240-4000-20CNH



### Heavy-Duty Center Punch Clamp Tool & Clamps

WB20X, WH20X, WMP20X, WT20X	BCP-10-00H
WB30X, WDP30X, WT30X	BCP-16-00H
WH15X, WX15	BCP-80-00H
WT40X	BCP-20-00H
WX10	BCP-60-00H
1" ~ 4" pumps	BCP-P1000H



### Blue Goodyear Spiraflex Discharge Hose (100' Bulk)

WB20X, WH20X, WMP20X, WT20X (80 psi)	1145-2000-100H
WB30X, WDP30X, WT30X (55 psi)	1145-3000-100H
WH15X, WX15 (90 psi)	1145-1500-100H



### 20' Green PVC Water Suction Hose Assembly (Coupled Male & Female Pin Lug)

WB20X, WH20X, WMP20X, WT20X	1240-2000-20H
WB30X, WDP30X, WT30X	1240-3000-20H
WH15X, WX15	1240-1500-20H
WT40X	1240-4000-20H



# WATER PUMPS

## Hose—Boxed Kits

**20' Green Suction, 50' Blue Discharge, 3/8" Steel Strainer (Coupled Camlock & Pipe Nipple Including Male Adapters)**

WB20X, WMP20X, WT20X	124020-1145-CLKT
WB30X, WDP30X, WT30X	124030-1145-CLKT
WT40X	124040-1145-CLKT



**20' Green Suction, 50' Blue Discharge, Polycarbonate Nozzle, 1/8" Steel Strainer (Coupled Male & Female Pin Lug)**

WH15X (high pressure), WX15	124015H-1145-WHKT
WH20X (high pressure)	124020H-1145-WHKT



**20' Green Suction, 50' Blue Discharge, 3/8" Steel Strainer (Coupled Male & Female Pin Lug)**

WB20X, WMP20X, WT20X	124020-1145-PINKT
WB30X, WDP30X, WT30X	124030-1145-PINKT
WT40X	124040-1145-PINKT



## Hose—Suction

### Standard Suction Hose

Use the right hose for the right job. Honda offers standard suction hose in three diameters. Hose only, does not include fittings.

1" (5 m long)	78330-YB0-710AH
---------------	-----------------





# WATER PUMPS

## Lift and Wheel Kits

### Two Wheel Kits

Greatly improves the portability of the pump.

WT20, WT30, WT40	50130-YG1-000AH
------------------	-----------------



## Nozzles

### Adjustable Brass Hose Nozzle

Rated at 51 gpm @ 50 psi. Minimum recommended operating pressure is 25 psi.

WB20X, WH20X, WMP20X, WT20X	JAHN-200-B1H
WH15X, WX15	JAHN-150-B0H



### Adjustable Red Polycarbonate Hose Nozzle

Minimum recommended operating pressure is 25 psi.

WB20X, WH20X, WMP20X, WT20X (rated at 51 gpm @ 50 psi)	JAHN-200-P0H
WH15X, WX15 (rated at 59 gpm @ 50 psi)	JAHN-150-P0H



### Brass Cam Arm Assembly Service Kits

Order 2 per coupler.

1.5" and 2" pumps	06200-YB0-000AH
3" and 4" pumps	06300-YB0-000AH



### Replacement Hose Nozzle Gaskets (Brass & Poly)

WB20X, WH20X, WMP20X, WT20X	JAHNG-200-00H
WH15X, WX15	JAHNG-150-00H



# WATER PUMPS

## Strainers (Metal & Plastic)

Make sure only the right stuff goes through your Honda pump. We offer plastic strainers for regular pumps and rugged, metal strainers for trash and diaphragm pumps.



NO	MODEL	PART NUMBER	PUMP STYLE	MATERIAL	PUMP SIZE
1	WX10	78325-YB0-711AH	nipple	plastic	1"
2	WA/WB/WX15	78325-YB0-711	nipple	plastic	1.5"
3	WH15X	78325-YB7-020	nipple	plastic	1.5"
4	WA20K*	78325-954-000	female	metal	2"
5	WB20X	78325-YB3-010	nipple	plastic	2"
6	WD20X	78325-YB3-661	nipple	plastic	2"
7	WDP20X	M51-0000-078	female	metal	2"
8	WH20X	78325-YB7-702	nipple	plastic	2"
9	WMP20X	78325-YE0-003	female	plastic	2"
10	WP20X	78325-YE5-003	nipple	plastic	2"
11	WA30	78325-955-000	nipple	metal	3"
12	WB30X	78325-YB4-020	nipple	plastic	3"
13	WD30X	78325-YB4-662	nipple	plastic	3"
14	WDP30X	W70-2903-000	female	metal	3"
15	WT20/30X	78325-YB8-003	female	metal	3"
16	WT30X	78325-YB9-003	female	metal	3"
17	WT40X	78325-YD4-003	female	metal	4"

\* Metric thread

\*\* Discontinued with limited inventory

# WATER PUMPS

## Strainers (Steel)

### 1/8" NPT Hole Steel Strainers

WH15X (high pressure), WX15 1-1/2" round	SRHS-150-SMH
WH20X (high pressure) 2" round	SRHS-200-SMH



### 3/8" NPT Hole Steel Strainers

WB20X, WMP20X, WT20X 2" round	SRHS-200-00H
WB30X, WDP30X, WT30X 3" round	SRHS-300-00H
WT40X 4" round	SRHS-400-00H



### Steel Skimmer Strainers - NPT Threads

WB20X, WH20X, WMP20X, WT20X 2" top hole (3/8" hole)	SSKS-200-TH
WB30X, WDP30X, WT30X 3" top hole (3/8" hole)	SSKS-300-TH
WX10 1" bottom hole (1/16" hole)	78325-YB0-712AH

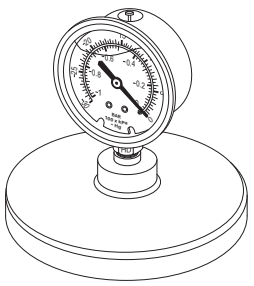


## Tools

### Water Pump Vacuum Tester

This special tool provides a quick and easy way to confirm that your centrifugal pumps are developing the proper suction vacuum, ensuring they will prime and operate properly.

Vacuum Tester	07APJ-YB3A100
---------------	---------------



# WATER PUMPS

## Displays

### WB20X, WH20X, WT20X, WMP20X Pump Accessory Display

This display box will help market a wide variety of 2" couplers.

Pump Accessory Display	QCKIT-DISPLAY-200
---------------------------	-------------------

